

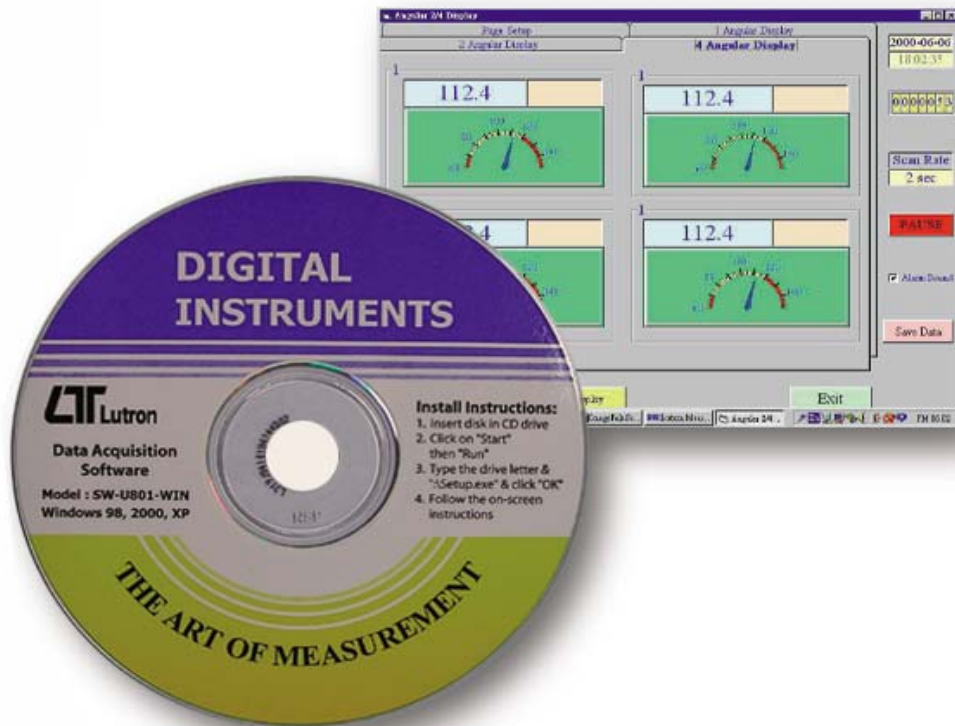
Multi-Displays

DATA ACQUISITION SOFTWARE



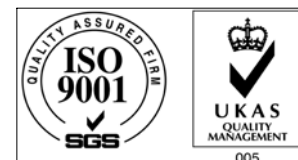
Model : SW-U801-WIN

ISO-9001, CE, IEC1010



FEATURES

The SW-U801-WIN is a multi-displays (1/2/4/6/8 displays) powerful WINDOWS program available for WIN 95 & WIN 98, which enables you to cooperate the LUTRON's instruments. It also provides the functions of data logging system, text display, angular display, chart display, data recorder high/low limit, data query, text report, chart report.. .xxx.mdb, xxx.txt data file can be retrieved for EXCELL, ACCESS., wide intelligent applications.



LUTRON ELECTRONIC

The Art of Measurement

MULTI-DISPLAYS DATA ACQUISITION SOFTWARE

Model : SW-U801-WIN



INTRODUCTION

The SW-U801-WIN is a multi-displays (1/2/4/6/8 displays) powerful WINDOWS program available for WIN 95 & WIN 98, which enables you to cooperate the LUTRON's instruments. It also provides the functions of data logging system, text display, angular display, chart display, data recorder high/low limit, data query, text report, chart report.. .xxx.mdb data file can be retrieved for EXCELL, ACCESS., wide intelligent applications.

1. The saved xxx.mdb data file can be retrieved for EXCELL, ACCESS...
2. When execute the " Print data " function, will generate the xxx.txt file.

GENERAL SPECIFICATIONS

System Requirement	<i>Computer with following operating system :</i> Win 98 Win 2000 XP <i>Monitor : VGA, EGA monitor</i>						
Function	Data recorder, text display, analog display, chart display, high/low limit, data query, text report, chart report.						
Common Port	Select COM 1 to COM 8.						
Display select	1 display, 2 displays, 4 displays, 6 displays, 8 displays.						
Data Record	Auto or Manual						
Sample Rate	2 to 3,600 seconds.						
Data Save Structure	Data file : XXX.mdb. <i>* Automatic save to disk.</i> Data file : XXX.txt. <i>* When execute the " Print data " function, will generate the xxx.text file.</i>						
Accessories Included	CD disk..... 1 PC. Operation manual..... 1 PC.						
Optional Cables	RS232 cable, Model : UPCB-01 Direct RS232 cable be used to connect the meter to the computer (COM port). RS232 cable, Model : UPCB-02 Isolated RS232 cable be used to connect the meter to the computer (COM port). USB cable, Model : USB-01 USB interface cable be used to connect the meter to the computer (USB port). RS232 cable, Model : UPCB-04 <i>* UPCB-04 is the double D9 RS232 cable.</i> <i>* Available for FG-5000A-232, FG-20KG-232.</i>						
* The instruments are available for SW-U801-WIN. * The exact cable's item that will cooperate with the instrument and the computer.	UPCB-01 or USB-01 available models		UPCB-02 or USB-01 available models			UPCB-04 available models	
	AM-4203 AM-4204 AM-4205 AM-4206 AM-4206M AM-4213 AM-4216 CD-4303 DO-5510 DO-5511 FG-5005 FG-5020 FG-5100 HT-3006 HT-3015 LX-105 LX-107 MS-7000 PH-207	PM-9100 PM-9107 PS-9302 TM-906A TM-907A TM-908 TM-910 TM-915 TM-917 TQ-8800 UVA-365 UVC-254 VB-8200 VB-8201 VB-8202 VB-8220 VC-9200 VB-8220	AM-4210 CD-4306 CD-4322 CD-4322 DM-9031 DM-9093 DM-9680 DO-5519 DT-2230 DT-2269 DW-6090 DW-6091 EM-9000 HD-3008 HT-3009 HT-306 HT-315 LCR-9073 LX-110	LX-1102 LX-1108 LX-1118 MY-81AP MY-91HT PDT-2250 PH-208 PH-221 PH-22109 PHT-3109 PPH-2108 PPH-221 RGB-1002 SL-4012 SL-4013 SL-4112 TM-2000 TM-903A TM-9126 TM-925	TM-926 TM-929 TM-936 TM-939 TM-946 TM-949 TQ-8801 VB-8203 VT-8204 YK-2001PH YK-2001TM YK-2004AH YK-2004CD YK-2005AH YK-2005AM YK-2005CD YK-2005LX YK-2005RH YK-2005TM	YK-2005WA YK-2014CD YK-22CT YK-22DO YK-80AM YK-80AP YK-80AS YK-80HT YK-90HT	FG-500A-232 FG-20KG-232

* Appearance and specifications listed in this brochure are subject to change without notice.