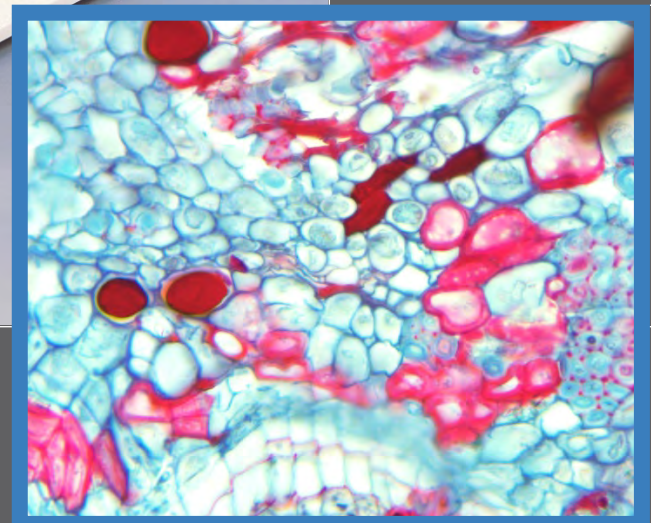




CXL

Educational Microscopy



LABOMED 

ideas for vision

CXL Educational Microscope

Item	Specifications
- Stand	Sturdy stand with convenient location of focus controls
- Viewing Body	Binocular tube, 45° inclined, 360° rotatable
- Eyepiece	Wide field eyepiece 10x/18mm with eyeguard,withanti fungus coating
- Nosepiece	Quadruple Nosepiece , with ball bearings
- Objectives	EP series DIN Semi Plan Achromatic objectives 4x,10x, 40x (spring loaded), 100x (spring loaded, oil) ,withanti fungus coating
- Stage	Mechanical stage 135 x 125mm with low drive co-axial control. Ball bearing slides with graduated scale. SS holder for slide 75 x 50mm movement.
- Focusing	Coaxial coarse and fine focusing system with ball bearing guideways
- Condenser	ABBE condenser N.A. 1.25 with aspheric lens. Iris diaphragm with snap in blue filter
- Illumination	6V/20W halogen with variable electronic intensity control.
- Electrical	Input 220V - 240V AC

Configurations

Description	Configuration
Halogen Standard, 20W	Binocular

Specifications

Distributor