

10% GST will apply to all items unless they are marked GST Free



BETA 200[®] Diagnostic Sets

BETA 200 Ophthalmoscope | BETA 200 F.O. Oscope | 1 set of reusable tips | 10 disposable ear tips |



BETA 200[®] 2.5 V Diagnostic Set with standard BETA battery handle

HEA1321011

RRP \$1,293.¹⁰

\$1,160.⁰⁰



BETA 200[®] 3.5 V Diagnostic Set with BETA NT handle and NT300 Charger

HEA1322042

RRP \$1,948.⁷⁸

\$1,750.⁰⁰



BETA 200[®] 3.5 V Diagnostic Set with BETA L handle and NT300 Charger

HEA3229420

RRP \$2,226.¹⁴



\$2,000.⁰⁰



Lithium-ion technology



Rechargeable handle with charge status display in the bottom insert

K 180[®] Diagnostic Sets

K 180 Ophthalmoscope | K 180 F.O. Oscope | 1 set of reusable tips | 10 disposable ear tips | Auto on-off recharge feature



K 180[®] 2.5 V Diagnostic Set with standard BETA battery handle

HEA2791011

RRP \$864.⁸⁵



\$775.⁰⁰

K 180[®] 3.5 V Diagnostic Set with BETA NT handle and NT300 Charger

HEA2792042

RRP \$1,487.⁹¹



\$1,329.⁰⁰

K 180[®] F.O. Oscope with standard BETA battery handle

1 set of reusable tips | Soft pouch

HEB1811011

RRP \$446.⁰⁰

\$400.⁰⁰

K 180[®] Ophthalmoscope with standard BETA battery handle

Standard aperture wheel No.1 | Soft pouch

HEC1821011

RRP \$570.⁶⁸

\$510.⁰⁰



K 100[®] Diagnostic Sets

K 100[®] 2.5 V Diagnostic Oscope with standard BETA battery handle

1 set of reusable tips | Soft pouch

- Direct Halogen Illumination; extremely bright, white light
- Extensive choice of accessories; very versatile e.g. for nasal examination
- Insufflation port, reliable test of tympanic mobility
- Ideal for minor procedures

HEB2451011

\$314.⁰⁰





HEINE EN100® Diagnostic Centre

The Heine EN100 wall unit sets the standard for durability and reliability, ensuring the performance of your instruments every time you reach for them.



The HEINE EN100 features:

- K180 Heads
- Constant regulated 3.5V output
- Magnetic On/Off mechanism
- Soft-Start prolongs globe life
- Continuous brightness control on the handle
- Instrument locks to prevent unauthorised removal
- Quality spiral cords with a comfortable working radius of up to 3m
- Modular system allows additional extension units

\$1,485.⁰⁰

RRP \$1,654.⁰⁷

HEA9512391

Optional Extension Unit

Adding an extension unit to the EN100 wall unit creates a system which allows you to use three different instruments simultaneously.

HEX9512135

\$345

The EN100 Wall unit fits the following heads:

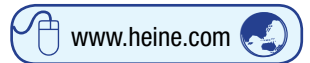
DELTA 20 Dermatoscope head Led	HEK0834201	\$1,359.⁰⁰
BETA 200 Otoscope head 3.5 V	HEB0211500	\$295.⁰⁰
K 180 Otoscope head 3.5 V	HEB0211550	\$226.⁰⁰
BETA 200 Ophthalmoscope head 3.5 V	HEC0230100	\$538.⁰⁰
K 180 Ophthalmoscope head 3.5 V	HEC0230207	\$369.⁰⁰
Tongue Blade Holder 3.5 V	HEB0212302	\$149.⁰⁰
Tongue Blade Holder 3.5 V	HEB0212305	\$149.⁰⁰

see page 22 & 23 **POPULAR OPTION**



For wooden tongue-blades

For Heine disposable tongue-blades





2012 Profiles

Yes, we are training hard!

Look out for the green boxes to see the Vital Team 2012 "Sport" profiles



10% GST will apply to all items unless they are marked GST Free



HEINE mini 3000®

mini-Series

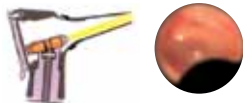
The light and ergonomic 'mini' Series of quality pocket instruments is characterised by compact design in combination with high quality polycarbonate construction, handles with automatic "off" switching and standard performance features to cover all basic diagnostic requirements.

mini 3000® Otoscope



Features

- Enhanced XHL Xenon Halogen Technology
- 100% brighter
- 3x magnification viewing window
- Built in swivelling window



Direct XHL Xenon Halogen illumination

Black HED0170210
Blue HED017021B

2x AA Batteries (Not included)

\$145.00

mini 3000® F.O. Otoscope



Features

- Fiber Optic illumination
- Enhanced XHL Xenon Halogen Technology
- 100% brighter
- 3x magnification viewing window
- Built in swivelling window



Fiber Optic (F.O) illumination

HED0170110

2x AA Batteries (Not included)

\$265.00

mini 3000® Ophthalmoscope



Features

- Enhanced XHL Xenon Halogen Technology
- 5 different apertures
- Range of lenses -20D to +20D
- Perfect for when on the move and doing home visits



Black HED0171120
Blue HED171120B

2x AA Batteries (Not included)

\$300.00

mini 3000® Diagnostic Set

mini 3000 Ophthalmoscope | mini 3000 Otoscope | 2 mini 3000 battery handles | 1 set of reusable tips | 10 disposable ear tips |

Hard Case HED8732102 **\$510.00**

Also available with mini 3000 F.O. Otoscope

Hard Case HED8731102 **\$635.00**



BETA L Li-ion Rechargeable Handle

BETA L Handle with Li-ion rechargeable battery

HEX0799395 **\$525.00**

BETA L bottom insert with status display

HEX0299396 **\$165.00**



mini NT® charger set for mini 3000

Innovative, compact design. Practical and space saving.

HEX0199485 **\$430.00**



mini 3000® Tongue-blade holder

with blade ejector for HEINE disposable tongue-blades

HED0174118
\$180.00

Disposable tongue-blades

Strong and Hygienic
Bx/100

HEB0012304 **\$18.18**



NT300® charger

The NT 300 charger automatically charges HEINE rechargeable batteries.



HEX0099403 **\$470.00**

10% GST will apply to all items unless they



Free

HEINE HEINE XHL® Xenon Halogen Bulbs

For optimum performance and cost effectiveness

Otoscopy		Ophthalmoscopes	
Mini 2000	HEX0188056	Mini 2000/Alpha	HEX0188042
Mini 2000 F.O.	HEX0188037	Mini 3000	HEX0188106
Mini 3000	HEX0188110	K180 2.5 V	HEX0188084
Mini 3000 F.O.	HEX0188105	K180 3.5 V	HEX0288086
Mini Fibrilux	HEX0188041	Beta 200 2.5 V	HEX0188069
K180 2.5 V	HEX0188077	Beta 200 3.5 V	HEX0288070
K180 3.5 V	HEX0288078	Dermatoscopes	
		Mini 2000	HEX0188034
		Mini 3000	HEX0188109
		Delta 10 2.5 V	HEX0188038
		Delta 10 3.5 V	HEX0288046

2.5 V bulbs are coloured black
3.5 V bulbs are coloured red

BETA Battery Handle

- Standard 2.5V handle
- Uses 2 C-size batteries (not included)

HEX0199118 **\$120.00**



HEINE Rechargeable Batteries

(used for 3.5V BETA rechargeable handles)

- NiMH rechargeable battery 3.5V
HEX0299382 **\$124.00**
- Li-ion rechargeable battery 3.5V
HEX0079938 **\$245.00**
- Li-ion L rechargeable battery 3.5V
HEX0799383 **\$240.00**



BETA NT Rechargeable Handle

Ideal for a busy practice environment

This recharging option allows the user to recharge 2 Heine handles simultaneously

1. NT 300 Charger **HEX0099403** **\$470.00**
2. BETA NT bottom insert **HEX0299412** **\$35.50**
3. Rechargeable Battery (one of the following)
 - Li-ion* **HEX0079938** see below
 - NiMH **HEX0299382** see above
4. 3.5V Compatible bulb (codes will vary depending on instrument)



BETA TR Rechargeable Handle

A cost effective rechargeable system

This recharging option is suitable for the less frequent user, seeking an economical recharging solution

1. BETA TR Transformer **HEX0099308** **\$125.00**
2. BETA NT bottom insert **HEX0299385** **\$91.40**
3. Rechargeable Battery (one of the following)
 - Li-ion* **HEX0079938** see below
 - NiMH **HEX0299382** see below
4. 3.5V Compatible bulb (codes will vary depending on instrument)



HEINE AllSpec® Disposable tips

For BETA 200, K 180, mini 3000, mini 3000 F.O. otoscopes

- For single use. Hygienic, no cross-infection
- Original HEINE design. Firm fit to the otoscope head
- Assured quality. No sharp edges

Pack of 50 pieces (grey)

HEB0011128	Ø 2.5mm	(infants)		
HEB0011127	Ø 4mm	(adults)	Ø 2.5mm	Ø 4mm
Pkt/50	\$6.70	20+	\$5.60	

Desktop Dispenser - Pack of 250 pieces (grey)

HEB0011151	Ø 2.5mm	(infants)		
HEB0011150	Ø 4mm	(adults)		
Box/250	\$45.00	3+	\$42.00	10+ \$38.00



UniSpec Disposable Ear Specula

For K100 and BETA 100 Operating otoscopes; (non F.O otoscopes - Wide base ear tips)

HEB0011242	Ø 2.5mm	(infants)		
HEB0011241	Ø 4mm	(adults)	Ø 2.5mm	Ø 4mm
Pkt/50	\$8.88	20+	\$8.06	

UniSpec Specula Dispenser

A clean, new speculum for each and every patient

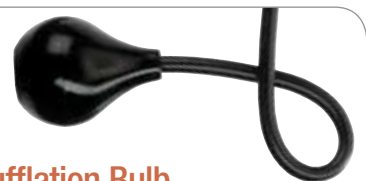
HEB0011146 **\$60.00**



AllSpec Tip-Dispenser

- A clean, new tip for each patient
- Dispenser holds up to 200 specs
- Instant selection of child or adult tip

HEB0011145 **\$55.00**



Insufflation Bulb

For Pneumatic Testing

For BETA 200 and K180 Otoscopes

HEB0011240 **\$18.05**

For mini 3000 F.O. Otoscope with connector

HED0080102 **\$24.88**